



ZAMANI ÖLÇME

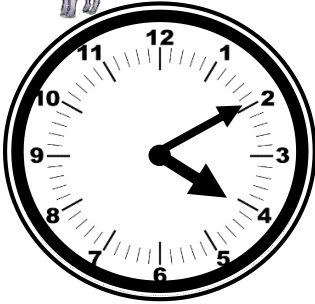


Aşağıdaki boşluklara yazılması gereken saatleri örnekteki gibi yazalım.

15 dakika önce		15 dakika sonra	30 dakika önce		30 dakika sonra
11.15	11.30	11.45		10.00	
	06.35			17.50	
	19.05			09.40	
	15.05			18.30	
	11.40			14.20	



Aşağıdaki boşluklara yazılması gereken saatleri örnekteki gibi yazalım.



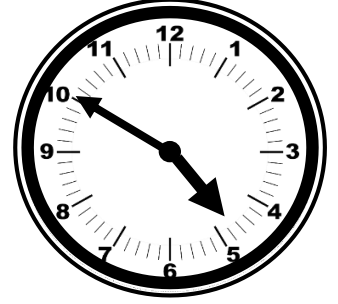
Saat 04.10

Saat 4'ü 10 geçiyor.



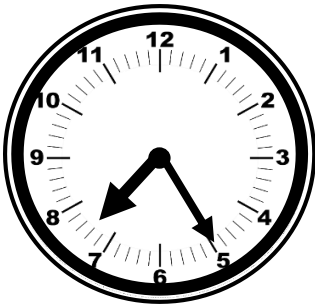
Saat

.....



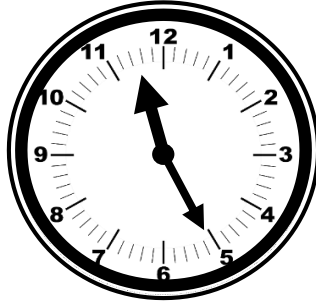
Saat 04.50

Saat 5'e 10 var.



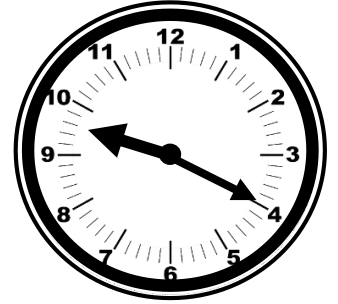
Saat

.....



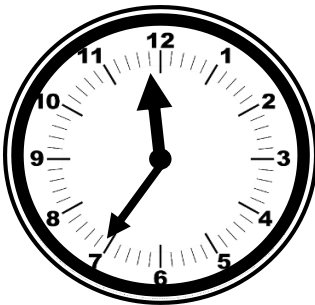
Saat

.....



Saat

.....



Saat

.....



Saat

.....



Saat

.....