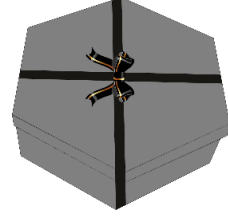
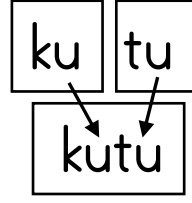
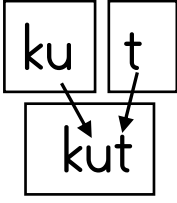


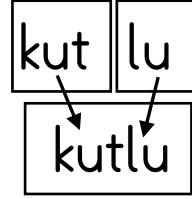
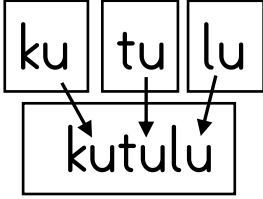


Hece ve kelimelerin üzerinden geç ve boşlukları örneklere göre doldur.



kut

kutu



kutulu

kutlu

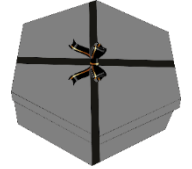
Emin iki kutu al.

Aşağıdaki kelimeleri ve metni okuyalım.

Kat  
Katla  
Katlama  
Katlama  
Katlama  
Katlama

Kut  
Kutla  
Kutlama  
Kutlama  
Kutlama  
Kutlama

## KUTU



Kemal o ne?  
Nalan o 1 kutu.  
O 1 teneke kutu.  
Kemal lokum al.  
Annene lokum al.  
Nil'e lokum al.  
Limon kokulu lokum al.  
Kutu kutu lokum al.